



SMB/SMC Series Coaxial Connectors

2003 ONLINE CATALOG

Contents

CLICK ON ANY LINE TO GO DIRECTLY TO THE INDICATED PAGE

| | |
|---|---|
| Navigation Guide | 2 |
| Specifications and interface dimensions | 3 |

SMB Cable Connectors

| | |
|--|---|
| Straight Cable Plugs | 4 |
| Right Angle Cable Plugs | 4 |
| Bulkhead Mounted Cable Jacks | 4 |

SMB Receptacles

| | |
|-------------------------------------|---|
| Bulkhead Jack Receptacles | 5 |
| Panel Jack Receptacles | 5 |
| P.C. Board Receptacles | 6 |
| PressMount Receptacles | 6 |

SMC Cable Connectors

| | |
|--|---|
| Straight Cable Plugs | 7 |
| Right Angle Cable Plugs | 7 |
| Bulkhead Mounted Cable Jacks | 7 |

SMC Receptacles

| | |
|-------------------------------------|---|
| Bulkhead Jack Receptacles | 8 |
| Panel Jack Receptacles | 8 |
| P.C. Board Receptacles | 8 |

Technical Information

| | |
|---------------------------------------|----|
| Mounting Figures | 9 |
| Cable Groups | 10 |
| Cable Assembly Instructions | 11 |
| Assembly Tooling | 11 |
| Ordering and Warranty | 12 |

We have configured this online catalog to take advantage of Acrobat navigation shortcuts (links). However, these links are not visible on the pages—making them visible would compromise the page’s readability.

- Clicking on any entry in the Table of Contents will take you to the indicated page.
- Shown below are the “hot spots” on all of the product pages that will take you to background information on various connector characteristics.
- After you use a link to jump to another page, you can use the “back” arrow in Acrobat’s menu bar to return to the page you jumped from.
- Configure Acrobat Reader to show bookmarks for a table of contents by specific characteristic (for example, cable plugs broken out by cable attachment method).
- To find a specific part number, use Acrobat’s search feature.

In addition, the pages are formatted to fit within the margins of standard laser or inkjet printers—no need to use the “shrink to fit” option when printing pages from Acrobat.

Click [here](#) to go to the Table of Contents

Click on the Delta logo on any page to jump to the table of contents.

Click on the page title to jump to specifications and interface dimensions.

BNC Cable Jacks

Panel Jack—Military Clamp for Flexible Cable

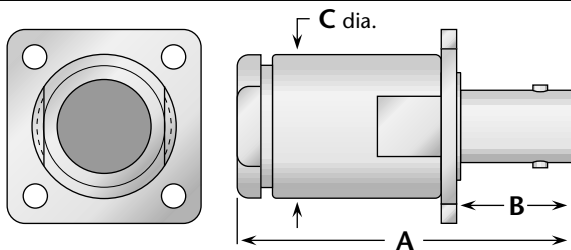


Figure 1

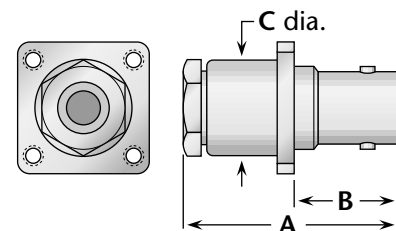


Figure 2

| Cable Group | Fig. | Dimensions | | | Mounting Figure | Plating | | Delta P/N | Assembly Procedure/Trim Code |
|-------------|------|------------|-----|-----|-----------------|---------|---------|---------------|------------------------------|
| | | A | B | C | | Body | Contact | | |
| 1 | 1 | 1.75 | .63 | .75 | 33 | Nickel | Silver | 1011-001-N330 | A/20 |
| 2, 3 | 1 | 1.75 | .63 | .75 | 33 | Nickel | Silver | 1011-004-N330 | A/20 |
| 5, 6 | 2 | 1.16 | .55 | .50 | 07 | Nickel | Silver | UG-291C/U | A/17 |

Click here to jump to dimensions for Delta mounting figures.

Click here to jump to the cable assembly procedure for this connector.

Click here to jump to a guide to Delta cable groups.

Click here to go to Delta’s website if your computer is configured for Web connection via Acrobat.

General Description

Delta SMB connectors are subminiature, 50Ω impedance connectors with snap-on coupling. They are best suited for use with cables in the range of .070" to .120" diameter, such as RG-178 and RG-316/U.

Delta SMC connectors (page 7) are similar in size and construction to SMB series, but employ #10–32 threaded coupling, and have a higher upper frequency limit than SMB.

All Delta SMB and SMC connectors are available with gold-plated bodies, or with nickel-plated bodies for economy.

As with our other connector series, Delta's *customer-driven design* results in SMB and SMC series connectors with practical and unique features that make your design and assembly process easier. Some of these include:

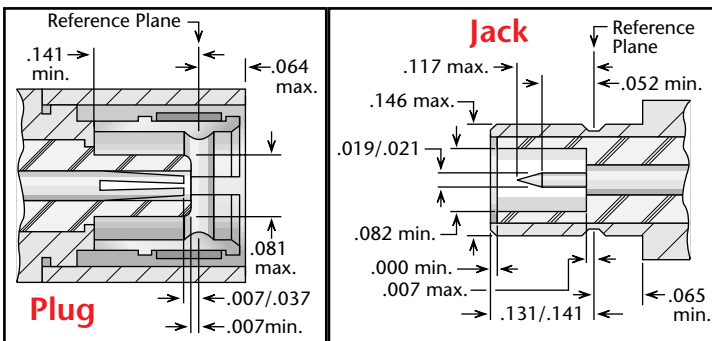
- SMB *PressMount* receptacles (page 6) mount securely in a single round hole, saving space on your components and reducing your housing fabrication costs.
- SMB and SMC panel receptacles with flange sizes to match the same hole pattern as standard SMA connectors, letting you drill one hole pattern and mount SMB, SMC, BNC, N, SMA, or TNC series connectors as needed.

Our SMB and SMC series product line is still growing, so call if you don't see what you need.

For adapters between SMB or SMC and other series, download the document *DeltaABS.pdf* from our website.

SMB and SMC Specifications*

SMB Interfaces**



Electrical:

Nominal Impedance: 50 ohms.

Frequency Range: SMB: DC–4 GHz.

SMC: DC–10 GHz.

Voltage Rating: 250 volts RMS (when used with RG-178-class cables); 335 volts RMS (when used with RG-316-class cables).

Dielectric Withstanding

Voltage: 750 volts RMS (when used with RG-178-class cables); 1,000 volts RMS (when used with RG-316-class cables).

Insulation Resistance: 1,000 megohms.

Materials/Finishes:

Insulators: Teflon per ASTM D1710.

Male Contacts: Brass per ASTM B16.

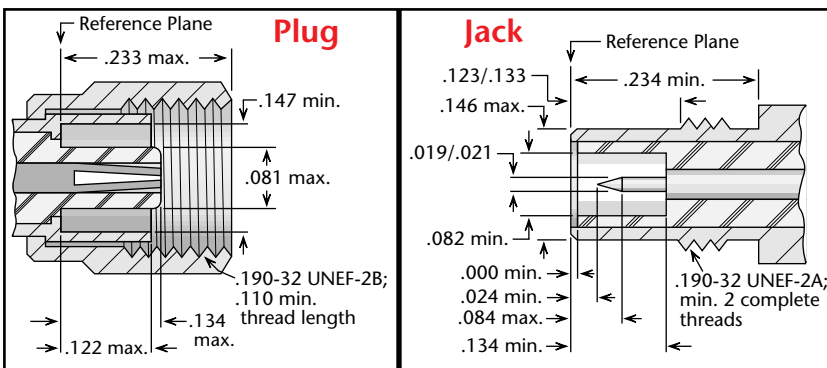
Female Contacts: Beryllium Copper per ASTM B196.

Contact Plating: Gold per MIL-G-45204.

Gaskets: Silicone rubber per ZZ-R-765, Class II, Grade 50.

Other Metal Parts: Brass per ASTM B16, plated: Gold per MIL-G-45208, or Nickel per QQ-N-290.

SMC Interfaces**



All other specifications are in accordance with the latest issues of MIL-PRF-39012, or MIL-A-55339, or other applicable MIL specifications, and interfaces are in accordance with MIL-STD-348.

*These specifications are typical and may not apply to all connectors. Detailed specifications for individual connectors are available on request.

**Some proportions altered to illustrate detail.

Straight and Right Angle Plugs—For Flexible Cable

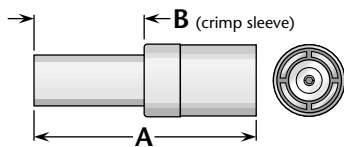


Figure 1
(Crimp type)

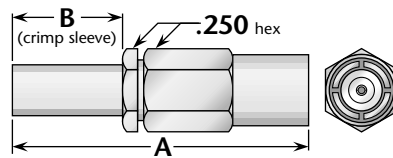


Figure 2
(Crimp type)

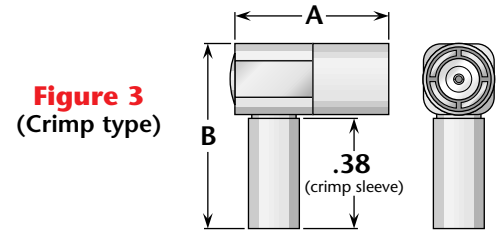


Figure 3
(Crimp type)

| Cable Group | Figure | Dimensions | | Plating | | Delta P/N | Assembly Procedure/ Trim Code |
|-------------|--------|------------|-----|---------|----------|-----------------|----------------------------------|
| | | A | B | Body | Contact | | |
| 9 | 1 | .80 | .38 | Gold | Gold | 2403-037-G000-2 | B/28 |
| 9 | 1 | .80 | .38 | Nickel | Gold | 2403-037-N000-2 | B/28 |
| 9 | 2 | 1.03 | .38 | Gold | Gold (C) | 2402-037-G001 | *** |
| 9 | 2 | 1.03 | .38 | Nickel | Gold (C) | 2402-037-N001 | *** |
| 9 | 3 | .52 | .63 | Gold | Gold (C) | 2407-037-G001 | B/29 |
| 9 | 3 | .52 | .63 | Nickel | Gold (C) | 2407-037-N001 | B/29 |
| 10 | 1 | .80 | .38 | Gold | Gold | 2403-100-G000 | B/28 |
| 10 | 1 | .80 | .38 | Nickel | Gold | 2403-100-N000 | B/28 |
| 10 | 2 | 1.03 | .38 | Gold | Gold (C) | 2402-100-G001 | *** |
| 10 | 2 | 1.03 | .38 | Nickel | Gold (C) | 2402-100-N001 | *** |
| 10 | 3 | .52 | .63 | Gold | Gold (C) | 2407-100-G001 | B/29 |
| 10 | 3 | .52 | .63 | Nickel | Gold (C) | 2407-100-N001 | B/29 |
| 11 | 1 | .80 | .38 | Gold | Gold | 2403-038-G000-1 | *** |
| 11 | 1 | .80 | .38 | Nickel | Gold | 2403-038-N000-1 | *** |
| 11 | 2 | 1.03 | .38 | Gold | Gold (C) | 2402-038-G001 | *** |
| 11 | 2 | 1.03 | .38 | Nickel | Gold (C) | 2402-038-N001 | *** |
| 11 | 3 | .52 | .63 | Gold | Gold (C) | 2407-038-G001-1 | B/29 |
| 11 | 3 | .52 | .63 | Nickel | Gold (C) | 2407-038-N001-1 | B/29 |

Bulkhead Jack—For Flexible Cable

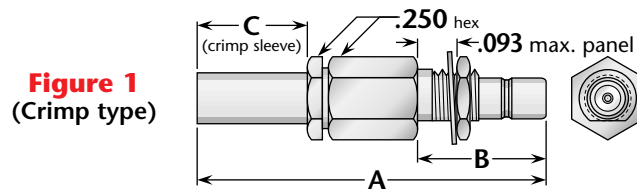


Figure 1
(Crimp type)

| Cable Group | Fig. | Dimensions | | | Mounting Figure | Plating | | Delta P/N | Assembly Procedure/ Trim Code |
|-------------|------|------------|------|-----|-----------------|---------|----------|---------------|----------------------------------|
| | | A | B | C | | Body | Contact | | |
| 9 | 1 | 1.17 | .426 | .38 | 68 | Gold | Gold (C) | 2419-037-G681 | *** |
| 9 | 1 | 1.17 | .426 | .38 | 68 | Nickel | Gold (C) | 2419-037-N681 | *** |
| 10 | 1 | 1.17 | .426 | .38 | 68 | Gold | Gold (C) | 2419-100-G681 | *** |
| 10 | 1 | 1.17 | .426 | .38 | 68 | Nickel | Gold (C) | 2419-100-N681 | *** |
| 11 | 1 | 1.17 | .426 | .38 | 68 | Gold | Gold (C) | 2419-038-G681 | *** |
| 11 | 1 | 1.17 | .426 | .38 | 68 | Nickel | Gold (C) | 2419-038-N681 | *** |

***Contact factory for cable assembly instructions. • (C) in contact plating column indicates captive contact.

Bulkhead Jack Receptacles

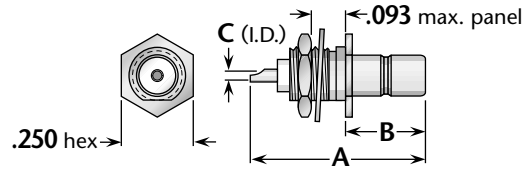


Figure 1

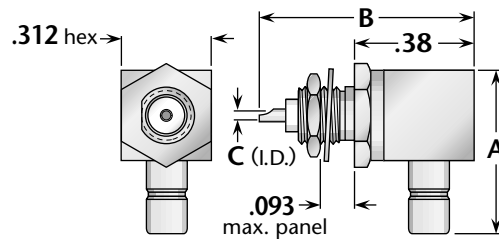


Figure 2

| Figure | Dimensions | | | Mounting Figure | Plating | | Delta P/N |
|--------|------------|------|------|-----------------|---------|----------|---------------|
| | A | B | C | | Body | Contact | |
| 1 | .59 | .265 | .035 | 68 | Gold | Gold (C) | 2420-000-G681 |
| 1 | .59 | .265 | .035 | 68 | Nickel | Gold (C) | 2420-000-N681 |
| 2 | .59 | .75 | .022 | 68 | Gold | Gold (C) | 2422-000-G681 |
| 2 | .59 | .75 | .022 | 68 | Nickel | Gold (C) | 2422-000-N681 |

Panel Jack Receptacle

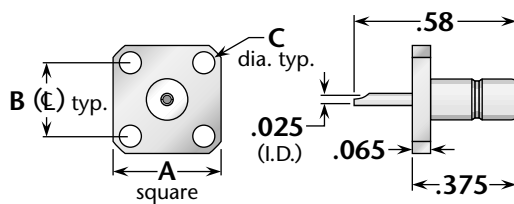


Figure 1
(3/8" square flange)

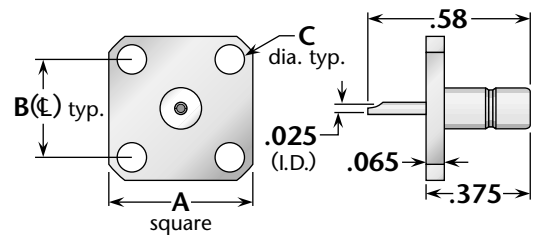
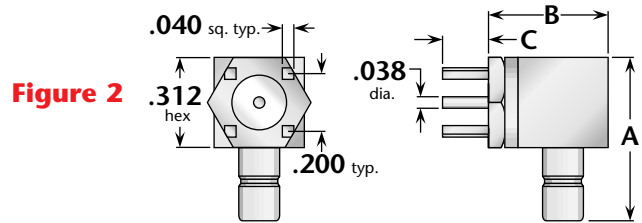
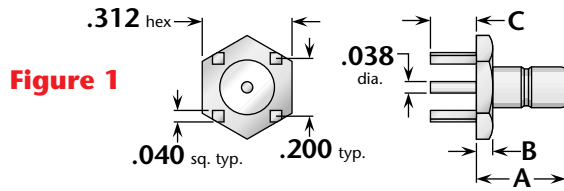


Figure 2
(1/2" square flange)

| Figure | Dimensions | | | Mounting Figure | Plating | | Delta P/N |
|--------|------------|------|------|-----------------|---------|----------|---------------|
| | A | B | C | | Body | Contact | |
| 1 | .375 | .232 | .093 | 91A | Gold | Gold (C) | 2413-000-G911 |
| 1 | .375 | .232 | .093 | 91A | Nickel | Gold (C) | 2413-000-N911 |
| 2 | .500 | .340 | .102 | 05 | Gold | Gold (C) | 2413-000-G051 |
| 2 | .500 | .340 | .102 | 05 | Nickel | Gold (C) | 2413-000-N051 |

(C) in contact plating column indicates captive contact.

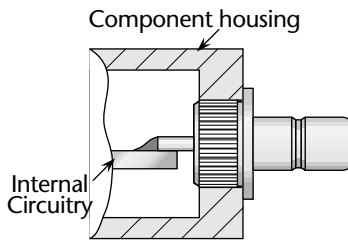
Printed-Circuit Board Receptacles



| Figure | Dimensions | | | Max. Board | Mounting Figure | Plating | | Delta P/N |
|--------|------------|------|------|------------|-----------------|---------|----------|---------------|
| | A | B | C | | | Body | Contact | |
| 1 | .300 | .060 | .155 | .100 | PCB06 | Gold | Gold (C) | 2468-000-G001 |
| 1 | .300 | .060 | .155 | .100 | PCB06 | Nickel | Gold (C) | 2468-000-N001 |
| 2 | .59 | .375 | .155 | .100 | PCB06 | Gold | Gold (C) | 2470-000-G00E |
| 2 | .59 | .375 | .155 | .100 | PCB06 | Nickel | Gold (C) | 2470-000-N00E |

PressMount Receptacles

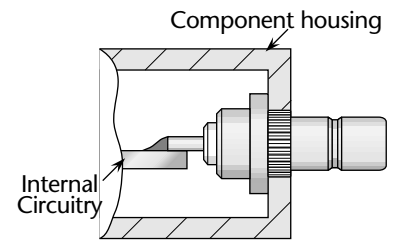
Delta PressMount Receptacles



Front mount

These connectors eliminate the need for complicated mounting hole patterns and mounting hardware. They are simply pressed into a single through hole, and the precisely-engineered knurled mounting section provides retention strength far greater than normal mating and unmating forces. An integral shoulder provides a positive stop when mounting.

PressMounts are available for a wide variety of Delta connector series, and can be used in packages as small as the outer diameter of the connector body.



Rear mount

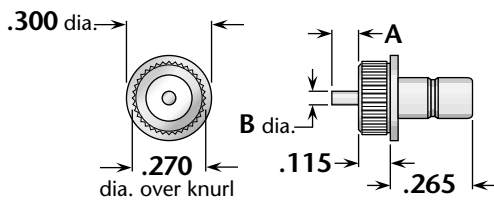


Figure 1
(Post contact, front mount, stainless steel body)

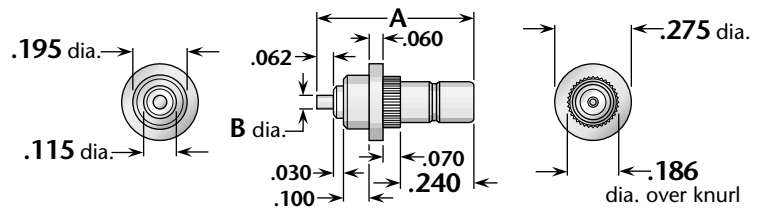


Figure 2
(Post contact, rear mount, brass body)

| Figure | Dimensions | | Min. Panel | Mounting Hole | Plating | | Delta P/N |
|--------|------------|------|------------|-----------------|------------|----------|-----------------|
| | A | B | | | Body | Contact | |
| 1 | .062 | .050 | .100 | .267 ±.001 dia. | Passivated | Gold (C) | 2420-000-K911-1 |
| 2 | .500 | .060 | .062 | .182 ±.001 dia. | Gold | Gold (C) | 2421-000-G911 |

(C) in contact plating column indicates captive contact.

Straight and Right Angle Plugs—For Flexible Cable

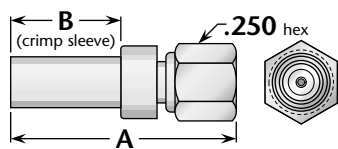


Figure 1
(Crimp type)

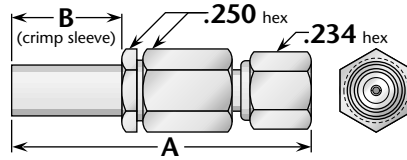


Figure 2
(Crimp type)

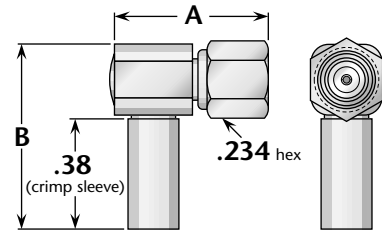


Figure 3
(Crimp type)

| Cable Group | Figure | Dimensions | | Plating | | Delta P/N | Assembly Procedure/ Trim Code |
|-------------|--------|------------|-----|---------|----------|-----------------|----------------------------------|
| | | A | B | Body | Contact | | |
| 9 | 1 | .80 | .38 | Gold | Gold | 2503-037-G000 | B/28 |
| 9 | 1 | .80 | .38 | Nickel | Gold | 2503-037-N000 | B/28 |
| 9 | 2 | 1.03 | .38 | Gold | Gold (C) | 2502-045-G001-1 | *** |
| 9 | 2 | 1.03 | .38 | Nickel | Gold (C) | 2502-045-N001-1 | *** |
| 9 | 3 | .56 | .63 | Gold | Gold (C) | 2507-037-G001 | B/29 |
| 9 | 3 | .56 | .63 | Nickel | Gold (C) | 2507-037-N001 | B/29 |
| 10 | 1 | .80 | .38 | Gold | Gold | 2503-100-G000 | B/28 |
| 10 | 1 | .80 | .38 | Nickel | Gold | 2503-100-N000 | B/28 |
| 10 | 2 | 1.03 | .38 | Gold | Gold (C) | 2502-100-G000-1 | *** |
| 10 | 2 | 1.03 | .38 | Nickel | Gold (C) | 2502-100-N000-1 | *** |
| 10 | 3 | .56 | .63 | Gold | Gold (C) | 2507-100-G001 | B/29 |
| 10 | 3 | .56 | .63 | Nickel | Gold (C) | 2507-100-N001 | B/29 |
| 11 | 1 | .80 | .38 | Gold | Gold | 2503-038-G000 | B/28 |
| 11 | 1 | .80 | .38 | Nickel | Gold | 2503-038-N000 | B/28 |
| 11 | 2 | 1.03 | .38 | Gold | Gold (C) | 2502-038-G001-1 | *** |
| 11 | 2 | 1.03 | .38 | Nickel | Gold (C) | 2502-038-N001-1 | *** |
| 11 | 3 | .56 | .63 | Gold | Gold (C) | 2507-038-G001 | B/29 |
| 11 | 3 | .56 | .63 | Nickel | Gold (C) | 2507-038-N001 | B/29 |

Bulkhead Jack—For Flexible Cable

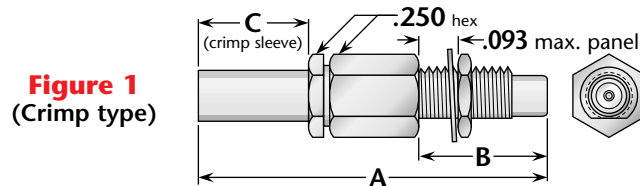


Figure 1
(Crimp type)

| Cable Group | Fig. | Dimensions | | | Mounting Figure | Plating | | Delta P/N | Assembly Procedure/ Trim Code |
|-------------|------|------------|------|-----|-----------------|---------|----------|---------------|----------------------------------|
| | | A | B | C | | Body | Contact | | |
| 9 | 1 | 1.17 | .426 | .38 | 68 | Gold | Gold (C) | 2519-037-G681 | *** |
| 9 | 1 | 1.17 | .426 | .38 | 68 | Nickel | Gold (C) | 2519-037-N681 | *** |
| 10 | 1 | 1.17 | .426 | .38 | 68 | Gold | Gold (C) | 2519-100-G681 | *** |
| 10 | 1 | 1.17 | .426 | .38 | 68 | Nickel | Gold (C) | 2519-100-N681 | *** |
| 11 | 1 | 1.17 | .426 | .38 | 68 | Gold | Gold (C) | 2519-038-G681 | *** |
| 11 | 1 | 1.17 | .426 | .38 | 68 | Nickel | Gold (C) | 2519-038-N681 | *** |

***Contact factory for cable assembly instructions. • (C) in contact plating column indicates captive contact.

Bulkhead Jack Receptacles

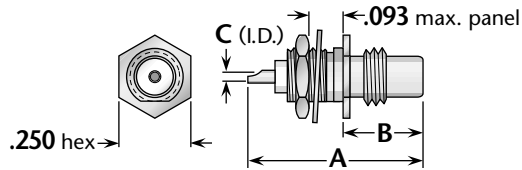


Figure 1

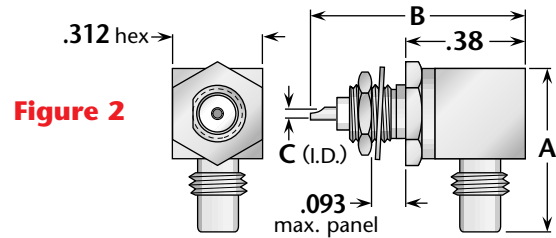


Figure 2

| Figure | Dimensions | | | Mounting Figure | Plating | | Delta P/N |
|--------|------------|------|------|-----------------|---------|----------|---------------|
| | A | B | C | | Body | Contact | |
| 1 | .59 | .265 | .035 | 68 | Gold | Gold (C) | 2520-000-G681 |
| 1 | .59 | .265 | .035 | 68 | Nickel | Gold (C) | 2520-000-N681 |
| 2 | .59 | .75 | .022 | 68 | Gold | Gold (C) | 2522-000-G681 |
| 2 | .59 | .75 | .022 | 68 | Nickel | Gold (C) | 2522-000-N681 |

Panel Jack Receptacle

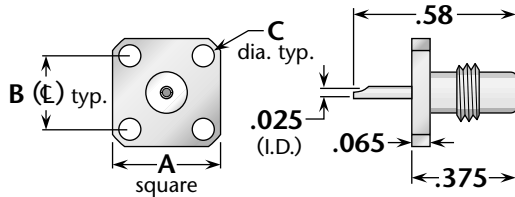


Figure 1
(3/8" square flange)

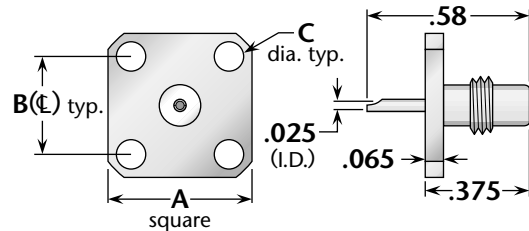


Figure 2
(1/2" square flange)

| Figure | Dimensions | | | Mounting Figure | Plating | | Delta P/N |
|--------|------------|------|------|-----------------|---------|----------|---------------|
| | A | B | C | | Body | Contact | |
| 1 | .375 | .232 | .093 | 91A | Gold | Gold (C) | 2513-000-G911 |
| 1 | .375 | .232 | .093 | 91A | Nickel | Gold (C) | 2513-000-N911 |
| 2 | .500 | .340 | .102 | 05 | Gold | Gold (C) | 2513-000-G051 |
| 2 | .500 | .340 | .102 | 05 | Nickel | Gold (C) | 2513-000-N051 |

Printed-Circuit Board Receptacles

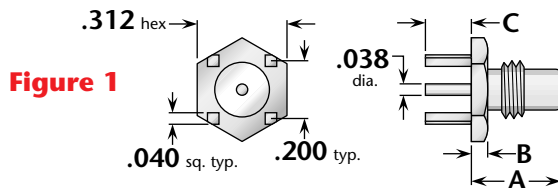


Figure 1

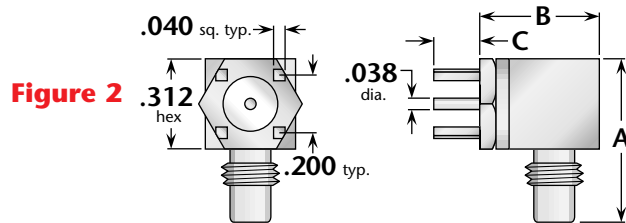
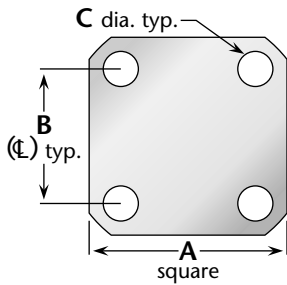


Figure 2

| Figure | Dimensions | | | Max. Board | Mounting Figure | Plating | | Delta P/N |
|--------|------------|------|------|------------|-----------------|---------|----------|---------------|
| | A | B | C | | | Body | Contact | |
| 1 | .300 | .060 | .155 | .100 | PCB06 | Gold | Gold (C) | 2568-000-G001 |
| 1 | .300 | .060 | .155 | .100 | PCB06 | Nickel | Gold (C) | 2568-000-N001 |
| 2 | .59 | .375 | .155 | .100 | PCB06 | Gold | Gold (C) | 2570-000-G00E |
| 2 | .59 | .375 | .155 | .100 | PCB06 | Nickel | Gold (C) | 2570-000-N00E |

(C) in contact plating column indicates captive contact.

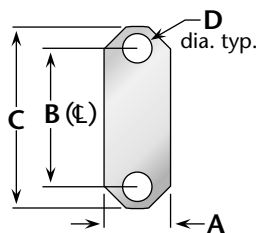
Connector Flanges (Panel mounted connectors)



4-hole flanges

| Figure | A | B | C |
|--------|-------|-------|-----------|
| 04 | 1/2 | .360 | .089 |
| 05 | 1/2 | .340 | .102 |
| 07 | 11/16 | .500 | #3-56 tap |
| 08 | 11/16 | .500 | .136 |
| 09 | 11/16 | .500 | .125 |
| 10 | 11/16 | .500 | .120 |
| 12 | 11/16 | .500 | .109 |
| 18 | 3/4 | .531 | .136 |
| 26 | 1 | .718 | #6-32 tap |
| 27 | 1 | .718 | #4-40 tap |
| 30 | 1 | .718 | .166 |
| 32 | 1 | .718 | .136 |
| 32A | 1 | .718 | .136* |
| 33 | 1 | .718 | .125 |
| 34 | 13/32 | .812 | .150 |
| 36 | 13/16 | .906 | #6-32 tap |
| 39 | 13/16 | .906 | .152 |
| 40 | 13/16 | .906 | .125 |
| 45 | 2 | 1.437 | .257 |
| 91 | .375 | .250 | .067 |
| 91A | .375 | .232 | .093 |

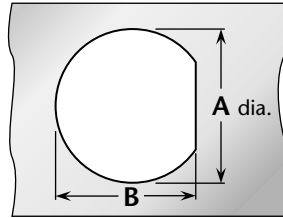
* Countersunk to .245 dia.



2-hole flanges

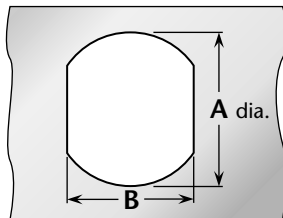
| Figure | A | B | C | D |
|--------|------|-------|------|------|
| 92 | .223 | .481 | .625 | .102 |
| 92A | .260 | .481 | .625 | .102 |
| 95 | .640 | 1.015 | 1.30 | .125 |

Panel Cutouts (Bulkhead mounted connectors)



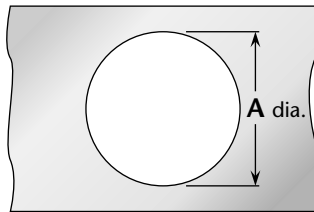
D-Hole

| Figure | A | B |
|--------|------|------|
| 51 | .755 | .723 |
| 54 | .630 | .598 |
| 55 | .630 | .583 |
| 57 | .557 | .531 |
| 59 | .505 | .473 |
| 62 | .442 | .410 |
| 63 | .407 | .362 |
| 65 | .380 | .348 |
| 66 | .319 | .292 |
| 67 | .255 | .236 |
| 68 | .195 | .176 |



Double D-Hole

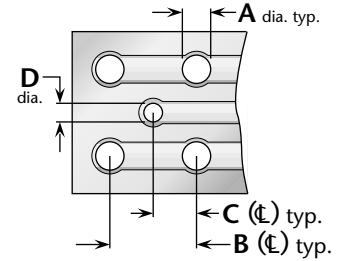
| Figure | A | B |
|--------|------|------|
| 69 | .755 | .692 |
| 72 | .630 | .536 |
| 75 | .380 | .341 |
| 84 | .319 | .278 |



Round Hole

| Figure | A |
|--------|------|
| 82 | .255 |
| 89 | .380 |

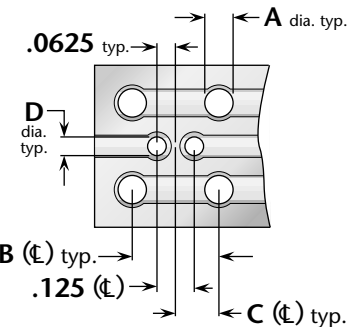
P.C. Board Drilling



(PCB traces are shown for illustrative purpose only, and are not representative of actual circuitry.)

Coaxial connectors

| Figure | A | B | C | D |
|--------|------|------|------|------|
| PCB01 | .067 | .400 | .200 | .045 |
| PCB02 | .045 | .500 | .250 | .045 |
| PCB03 | .067 | .300 | .150 | .035 |
| PCB05 | .067 | .200 | .100 | .055 |
| PCB06 | .067 | .200 | .100 | .045 |
| PCB07 | .045 | .177 | .088 | .045 |
| PCB08 | .032 | .100 | .050 | .032 |



(PCB traces are shown for illustrative purpose only, and are not representative of actual circuitry.)

Twinax connectors

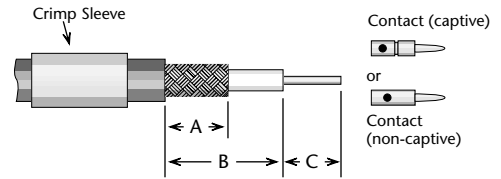
| Figure | A | B | C | D |
|--------|------|------|------|------|
| PCB04 | .045 | .500 | .250 | .045 |

| Cable Group Finder | | | |
|---------------------------|--------------|---------------|--------------|
| Cable | Group | Cable | Group |
| RG-5, 5A, B | 1A | RG-225 | 3C |
| RG-6, 6A | 1B | RG-228A | 20 |
| RG-8, 8A | 2A | RG-302 | 22 |
| RG-9, 9A, B | 3A | RG-303 | 23 |
| RG-10 | 15 | RG-304 | 24 |
| RG-11, 11A | 2B | RG-316 | 9A |
| RG-12 | 15 | RG-316DS | 10 |
| RG-13A | 3B | RG-393 | 4 |
| RG-14A | 16 | RG-400 | 6A |
| RG-17A | 17 | RG-401 | 12 |
| RG-18A | 18 | RG-402 | 13 |
| RG-21, 21A | 1A | RG-405 | 14 |
| RG-22, 22A, B | 28 | M17/2 | 1B |
| RG-55, 55B | 6B | M17/6 | 2B |
| RG-55A | 6A | M17/15 | 28 |
| RG-58, 58A, C | 5 | M17/28 | 5 |
| RG-59, 59A, B | 7A | M17/29 | 7A |
| RG-62, 62A, B, C | 7A | M17/30 | 7A |
| RG-71, 71A, B | 7B | M17/45 | 27 |
| RG-108, 108A | 27 | M17/73 | 1A |
| RG-115A | 19 | M17/162 | 1A |
| RG-118A | 20 | M17/112 | 1C |
| RG-122 | 8A | M17/74 | 2A |
| RG-126 | 21 | M17/75 | 3A |
| RG-141, 141A | 5 | M17/127 | 3C |
| RG-142, 142A | 6A | M17/77 | 3B |
| RG-142B | 6B | M17/60 | 6A |
| RG-143, 143A | 1C | M18/84 | 6A |
| RG-174 | 9A | M17/128 | 6A |
| RG-174DS | 10 | M17/97 | 7A |
| RG-178, 178A, B | 11 | M17/54 | 8A |
| RG-179A, 179B | 9B | M17/95 | 8B |
| RG-180, 180A, B | 8B | M17/137 | 8B |
| RG-187, 187A | 9B | M17/152 | 9A |
| RG-188, 188A | 9A | M17/93 | 11 |
| RG-195 | 8B | M17/129 | 12 |
| RG-196, 196A | 11 | M17/130 | 13 |
| RG-210 | 7A | M17/133 | 14 |
| RG-212 | 1C | M17/78 | 16 |
| RG-213 | 2A | M17/165 | 16 |
| RG-214 | 3A | M17/176 | 30 |
| RG-215 | 15 | AT&T 735A | 31 |
| RG-217 | 16 | Belden 8281 | 26 |
| RG-218 | 17 | Belden 9207 | 29 |
| RG-219 | 18 | Dearborn 6207 | 29 |
| RG-222 | 1C | IBM 7362211 | 29 |
| RG-223 | 6A | | |

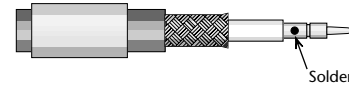
| Delta Cable Groups | |
|---------------------------|--|
| Group | Cables |
| 1 | 1A RG-5, 5A, 5B, 21, 21A; M17/73, /162 |
| | 1B RG-6, 6A; M17/2 |
| | 1C RG-143, 143A, 212, 222; M17/73, /112, /162 |
| 2 | 2A RG-8, 8A, 213; M17/74 |
| | 2B RG-11, 11A; M17/6 |
| 3 | 3A RG-9, 9A, 9B, 214; M17/75 |
| | 3B RG-13A, 216; M17/77 |
| | 3C RG-225; M17/127 |
| 4 | RG-393; M17/127 |
| 5 | RG-58, 58A, 58C, 141, 141A; M17/28, /111 |
| 6 | 6A RG-55A, 142, 142A, 223, 400; M17/60, /84, /128 |
| | 6B RG-55, 55B, 142B; M17/60, /84 |
| 7 | 7A RG-59, 59A, 59B, 62, 62A, 62B, 62C, 210; M17/29, /30, /97 |
| | 7B RG-71, 71A, 71B; M17/90 |
| 8 | 8A RG-122; M17/54 |
| | 8B RG-180, 180A, 180B, 195; M17/95, /137 |
| 9 | 9A RG-174, 188, 188A, 316; M17/152 |
| | 9B RG-179A, 179B, 187, 187A; M17/94, /136 |
| 10 | Double-Shielded RG-174, 316; M17/152 |
| 11 | RG-178, 178A, 178B, 196, 196A; M17/93 |
| 12 | .250" semi-rigid; RG-401; M17/129 |
| 13 | .141" semi-rigid; RG-402; M17/130 |
| 14 | .085" semi-rigid; RG-405; M17/133 |
| 15 | RG-10, 12, 215; M17/6, /74 |
| 16 | RG-14A, 217; M17/78, /165 |
| 17 | RG-17A, 218 |
| 18 | RG-18A, 219 |
| 19 | RG-115A |
| 20 | RG-118A, 228A |
| 21 | RG-126 |
| 22 | RG-302 |
| 23 | RG-303 |
| 24 | RG-304 |
| 25 | Special 8X cable; contact factory for details. |
| 26 | Belden 8281 |
| 27 | RG-108, 108A; M17/45 |
| 28 | RG-22, 22A, 22B; M17/15 |
| 29 | Belden 9207; Dearborn 6207; IBM 7362211 |
| 30 | M17/176 |
| 31 | AT&T 735A |

Assembly Procedure B

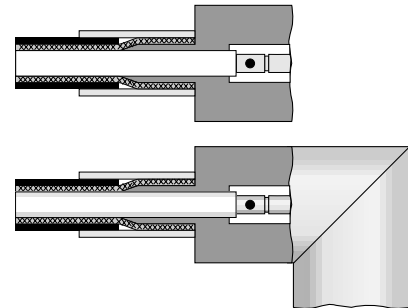
- 1) Trim cable per chart. Slide crimp sleeve back onto cable.



- 2) If support insulator is provided for RG-62 or 71 cable, insert into hollow in dielectric. Solder contact onto center conductor; back of contact flush with trimmed end of cable dielectric (omit this step for right angle connectors with access caps). Flare cut end of braid slightly by rotating dielectric.



- 3) Insert cable/contact into rear of body, with all braid wires on outside of crimp tail.
- For captive contact connectors, push cable in until contact snaps into insulator.
 - For noncaptive contact connectors, push cable in until cable dielectric bottoms in connector.
 - For right angle or tee connectors with access caps, push cable in until end of braid touches connector body shoulder, and cable center conductor rests in contact slot.



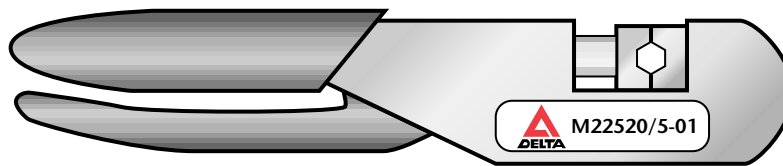
Trim excess braid wires even with shoulder of body. Slide crimp sleeve forward until flush with body and crimp (see page 176 for hex die sizes).

For right angle or tee connectors with access caps, solder center conductor into contact slot, then press cap into body until seated or screw into place.

Trim Codes For Assembly Procedure B

| Code | A | B | C |
|------|------|------|------|
| B/28 | .219 | .271 | .078 |
| B/29 | .200 | .320 | .060 |

Crimp Tools for Flexible Cable



Frame only—P/N M22520/5-01—Use with interchangeable dies listed below.

| For Cable Group(s) | Hex Die Size | Die Set P/N | Closure |
|--------------------|---------------------|-------------|---------|
| 2, 3, 4 | .429 hex, .400 wide | M22520/5-61 | A |
| 5, 6 | .213 hex, .400 wide | M22520/5-19 | B |
| 7 | .255 hex, .400 wide | M22520/5-19 | A |
| 9 | .128 hex, .400 wide | M22520/5-35 | B |
| 10 | .151 hex, .400 wide | M22520/5-37 | B |
| 11 | .105 hex, .400 wide | M22520/5-33 | B |



Warranty

We warrant our parts to be free from defects in materials and workmanship for one year from date of purchase. During that time, we will repair or replace (at our option) any parts found to be defective.

This warranty does not apply to parts which have been modified, used in conditions exceeding Delta or military specifications, or disassembled. We will not, under any circumstances, be responsible for consequential or incidental damages or installation costs.

No other warranties apply, and no other liability may be assumed or extended by representatives or distributors.

Returns

Returns will be accepted only with a Return Authorization number issued by Delta, and are subject to inspection and acceptance upon arrival. Restocking charges will be determined prior to issuance of Return Authorization.

All claims for shortages must be made within 30 days of receipt by customer.

Ordering Information

Orders are subject to the terms and conditions on our order acknowledgement, which may only be modified by written agreement prior to sale. Order changes, cancellation, or termination will be accepted only with written approval from Delta Electronics Manufacturing.

Copyright, Trademarks, and Patents

Entire contents copyright 2003, Delta Electronics Manufacturing Corporation. Reproduction rights are hereby granted for, and specifically limited to, printing or other reproduction of drawings and specifications for inclusion in specification or source control drawings, or for purchasing procedures, by Delta customers only.

Heli-Grip, *PressMount*, and the New England Craftsmanship logo are trademarks. The Heli-Grip design is covered by U.S. and foreign patents.

Delta Electronics Manufacturing Corporation
416 Cabot Street, P.O. Box 53
Beverly, MA 01915
FSCM/CAGE 00795

Catalog # SMBC2003 pdf 1.0